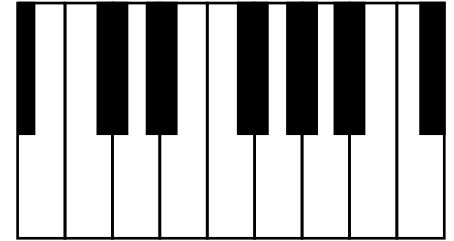


The whole/half-step pattern for a natural minor scale is **W-H-W-W-H-W-W** (W=whole, H=half).

Using the pattern, notate the following major scales with whole notes.

The first note for each scale is given for you. Use the keyboard to help you work out the rest.

2. **Draw a V between the 2nd-3rd and 5th-6th notes.**
3. **Write in the letter names for each note as your last step.**



The scale of A minor is done for you as an example.

A MINOR

D MINOR

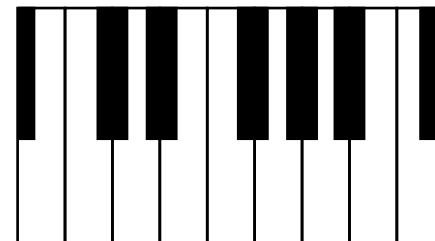
G MINOR

C MINOR

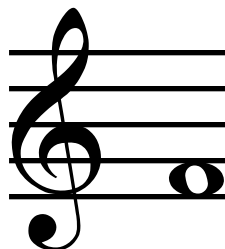
Theory A, p. 2

The whole/half-step pattern for a natural minor scale is **W-H-W-W-H-W-W** (W=whole, H=half).

1. **Using the pattern, notate the following major scales with whole notes.**
The first note for each scale is given for you. Use the keyboard to help you work out the rest.
2. **Draw a V between the 2nd-3rd and 5th-6th notes.**
3. **Write in the letter names for each note as your last step.**



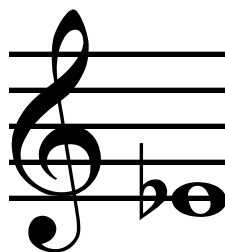
F MINOR



Bb MINOR



Eb MINOR



Ab MINOR

