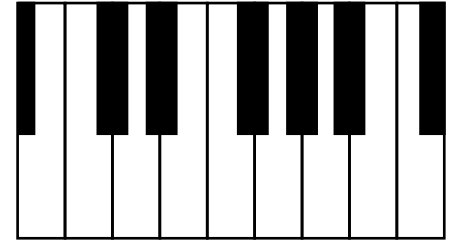


The whole/half-step pattern for a natural minor scale is **W-H-W-W-H-W-W** (W=whole, H=half).

- Using the pattern, notate the following major scales with whole notes.**
The first note for each scale is given for you. Use the keyboard to help you work out the rest.
- Draw a V between the 2nd-3rd and 5th-6th notes.**
- Write in the letter names for each note as your last step.**



The scale of A minor is done for you as an example.

A MINOR

E MINOR

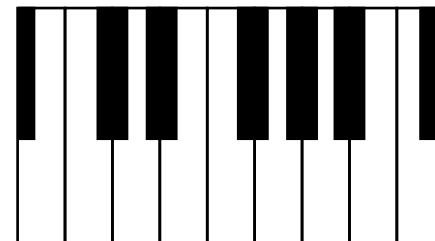
B MINOR

F# MINOR

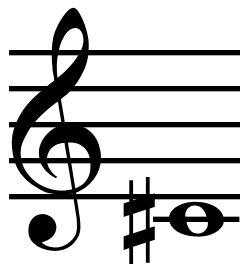
Theory B, p. 2

The whole/half-step pattern for a natural minor scale is **W-H-W-W-H-W-W** (W=whole, H=half).

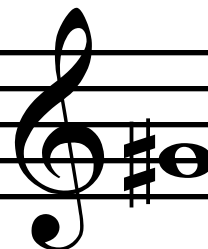
1. **Using the pattern, notate the following major scales with whole notes.**
The first note for each scale is given for you. Use the keyboard to help you work out the rest.
2. **Draw a V between the 2nd-3rd and 5th-6th notes.**
3. **Write in the letter names for each note as your last step.**



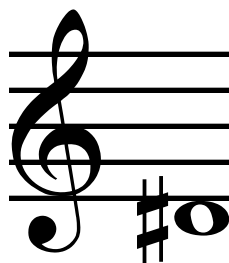
C# MINOR



G# MINOR



D# MINOR



A# MINOR

